

Office/Warehouse Space For Lease

2018 E. Riverside



Dan Cantu

Cell: 509-993-9939

danc@cantucommercial.com



CANTU
COMMERCIAL PROPERTIES LLC

1410 N. Mullan Rd. # 110
Spokane Valley, WA 99206

Office: 509-777-1111

Fax: 509-777-1112

www.cantucommercial.com

- Very Energy Efficient Building w/ Motion Sensor Radiant Heat
- Each Bay Has: 12x12 Over Head Door, AC/Heat, Storage Upstairs w/ Separate AC/Heat, Office Space, Restroom, Signage, Wash Bays & Floor Drains.

Bay 1: 3,250 Total SF

(1,650 SF Warehouse, 800 SF Office, 800 SF Storage Upstairs)

Bay 3: 2,950 Total SF

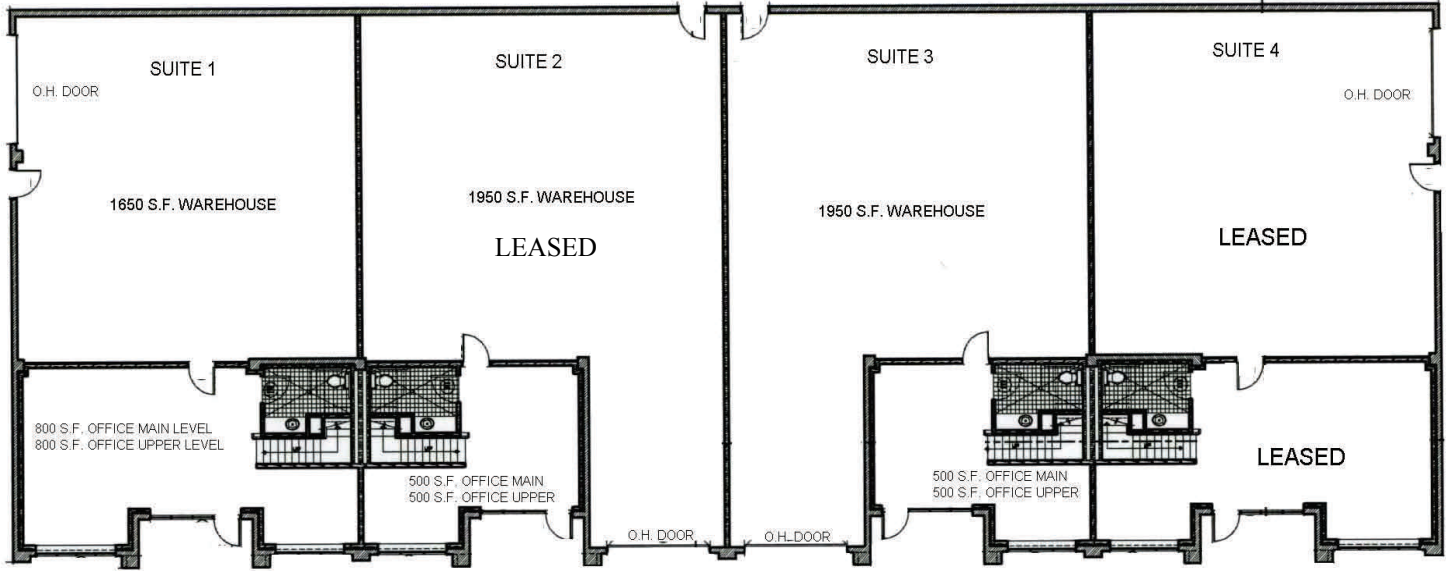
(1,950 SF Warehouse, 500 SF Office, 500 SF Storage Upstairs)

- Ample Free On-Site Parking w/35 Parking Stalls Avail.
- 2 BLKS from Freeway, Close to Downtown, Hospitals & North South Access.

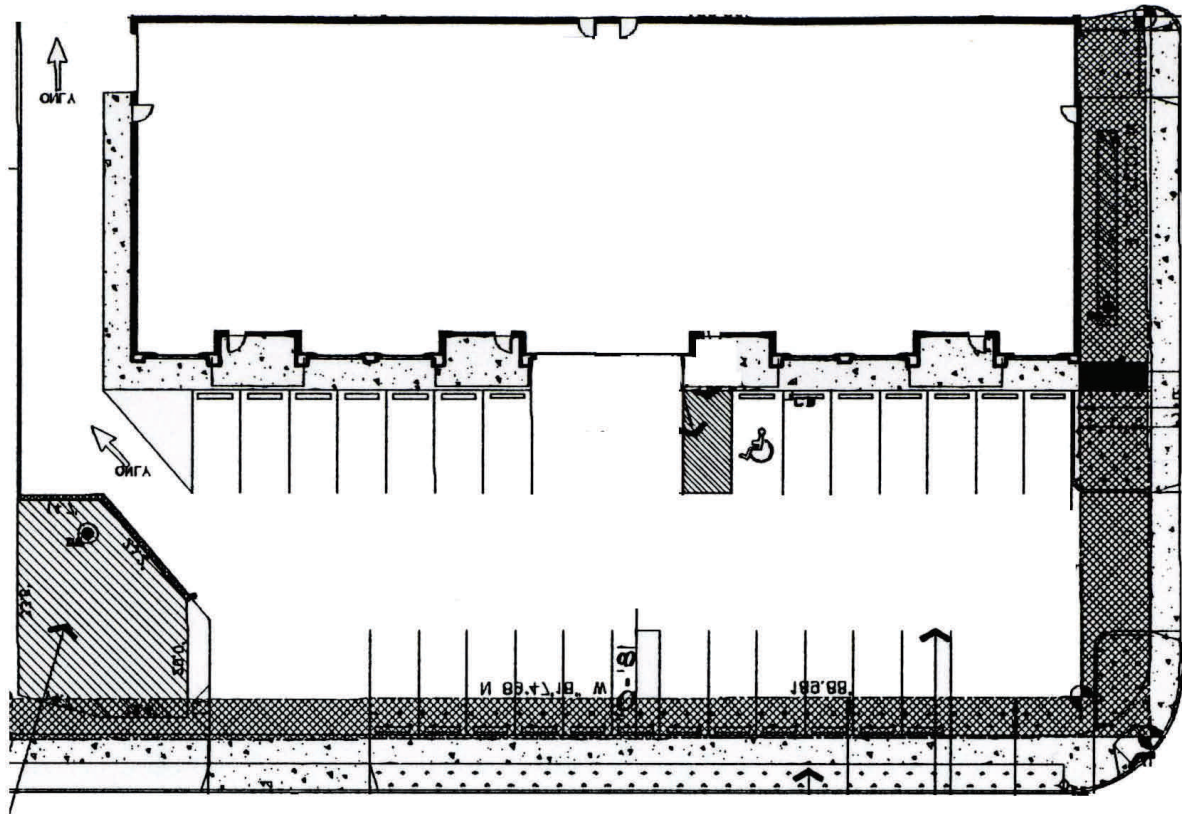
\$1.00 PSF/MO NNN for Office

\$.50 PSF/MO NNN for Whse

Floor Plan



Site Plan



These floor plans are for convenience use only. All critical measurements should be verified.