

# Valley Office Space for Lease

## 2510 N. Pines



**Greg Tapley**

Cell: 509-998-2404

gregt@cantucommercial.com

- Just a Few Blocks North of I-90
- Easy Access & Ample On Site Parking
- Signage Available

### **Available Space**

- ~ Suite 1\*: 2,891 SF \$13.50 S/F
- ~ Suite 3\*: 1,557 SF \$13.50/SF
- ~ Suite 207: 839 SF \$13.50/SF

\*Suites 1 & 3 can be combined  
into **4,448 SF** of space.

### **Full Service Leases**

(Excluding Janitorial)

\*See Attached Floor Plans\*



**CANTU**

COMMERCIAL PROPERTIES LLC

1410 N. Mullan Rd. Suite 110

Spokane Valley, WA 99206

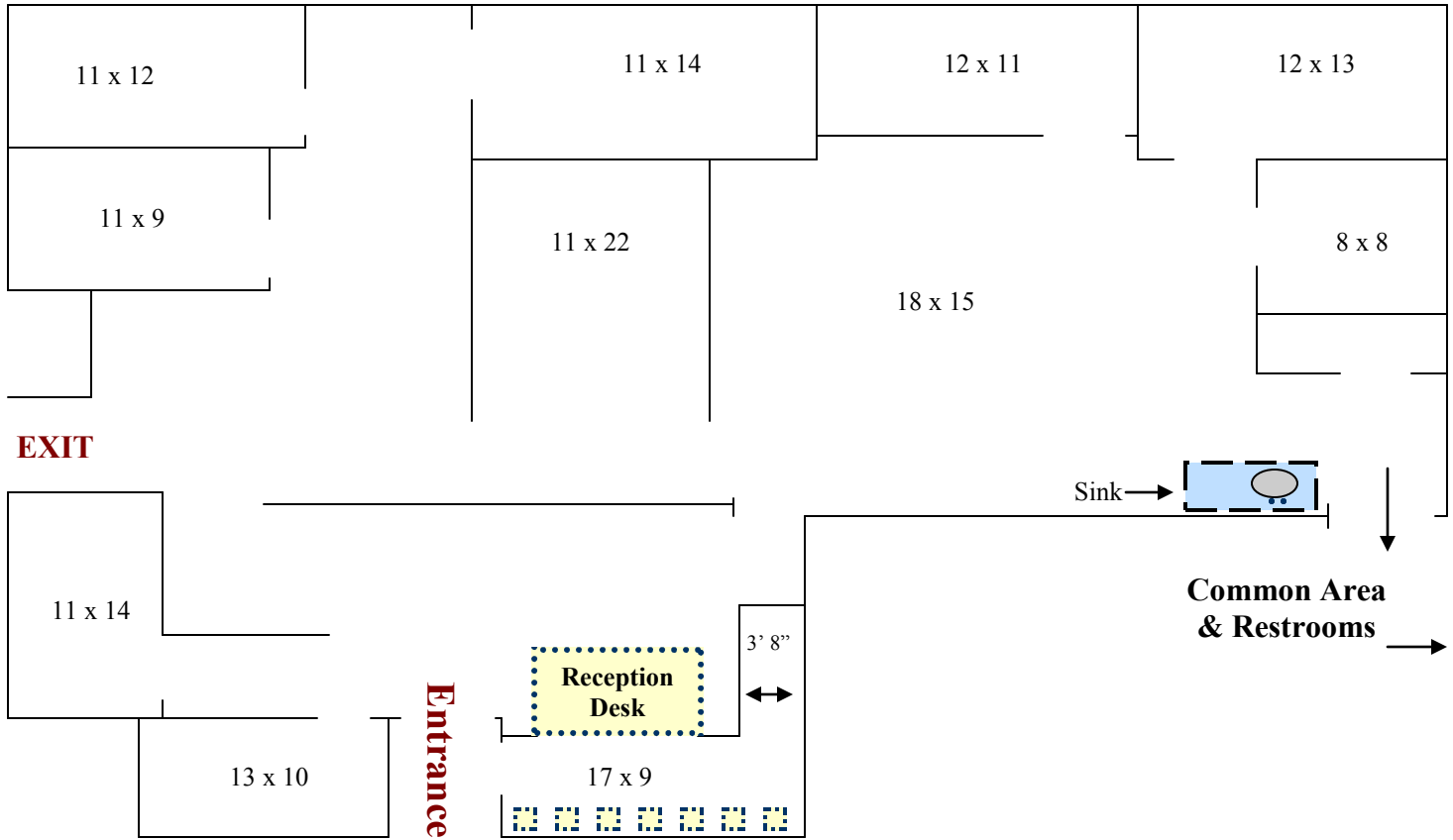
Office: 509-777-1111

Fax: 509-777-1112

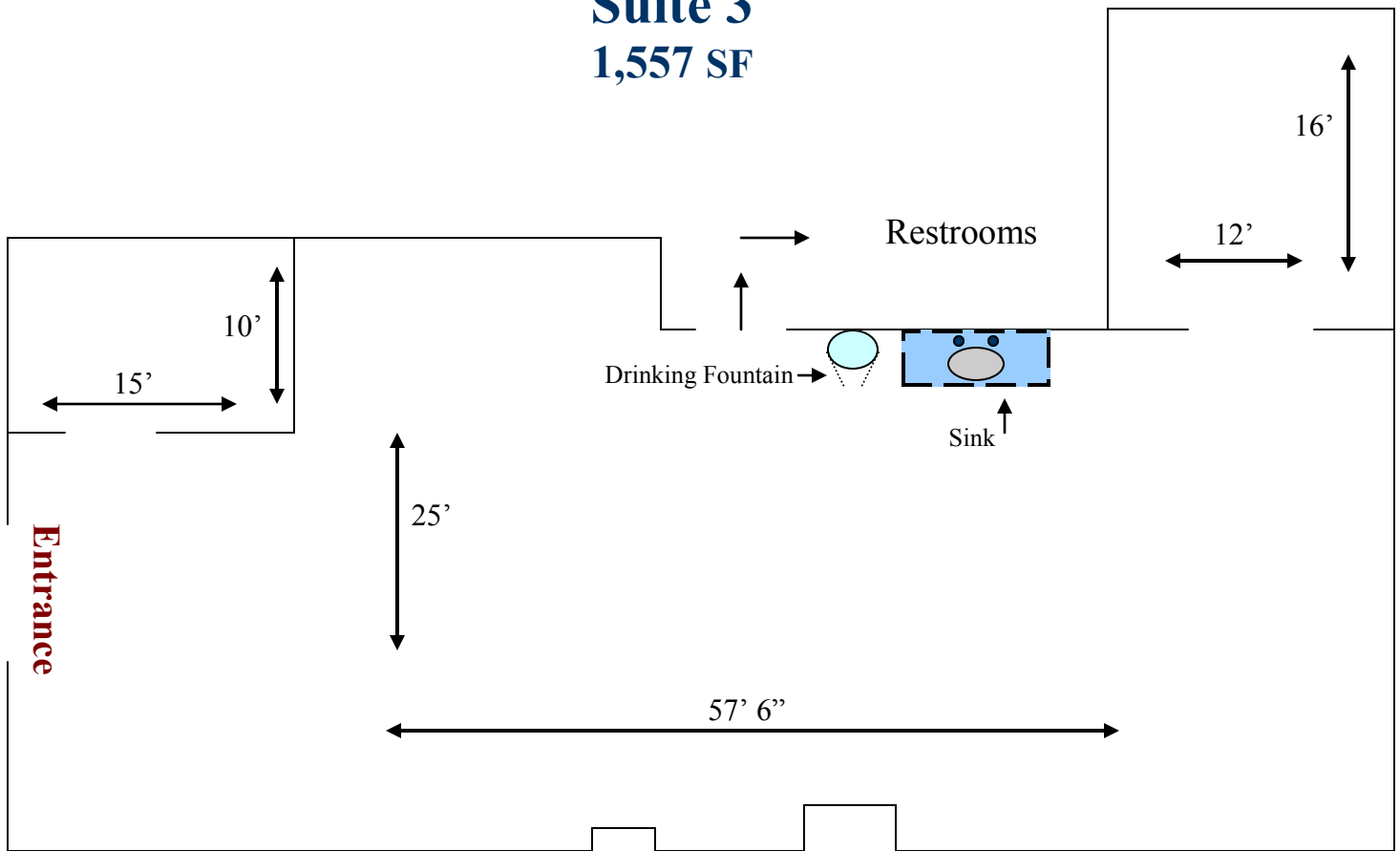
www.cantucommercial.com

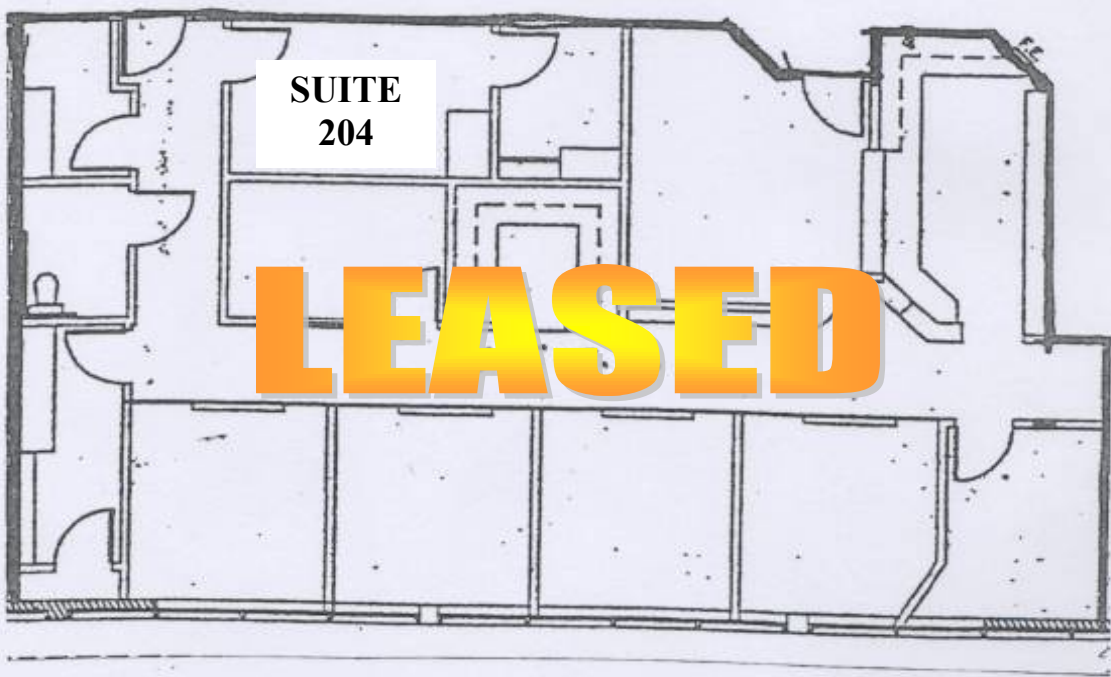
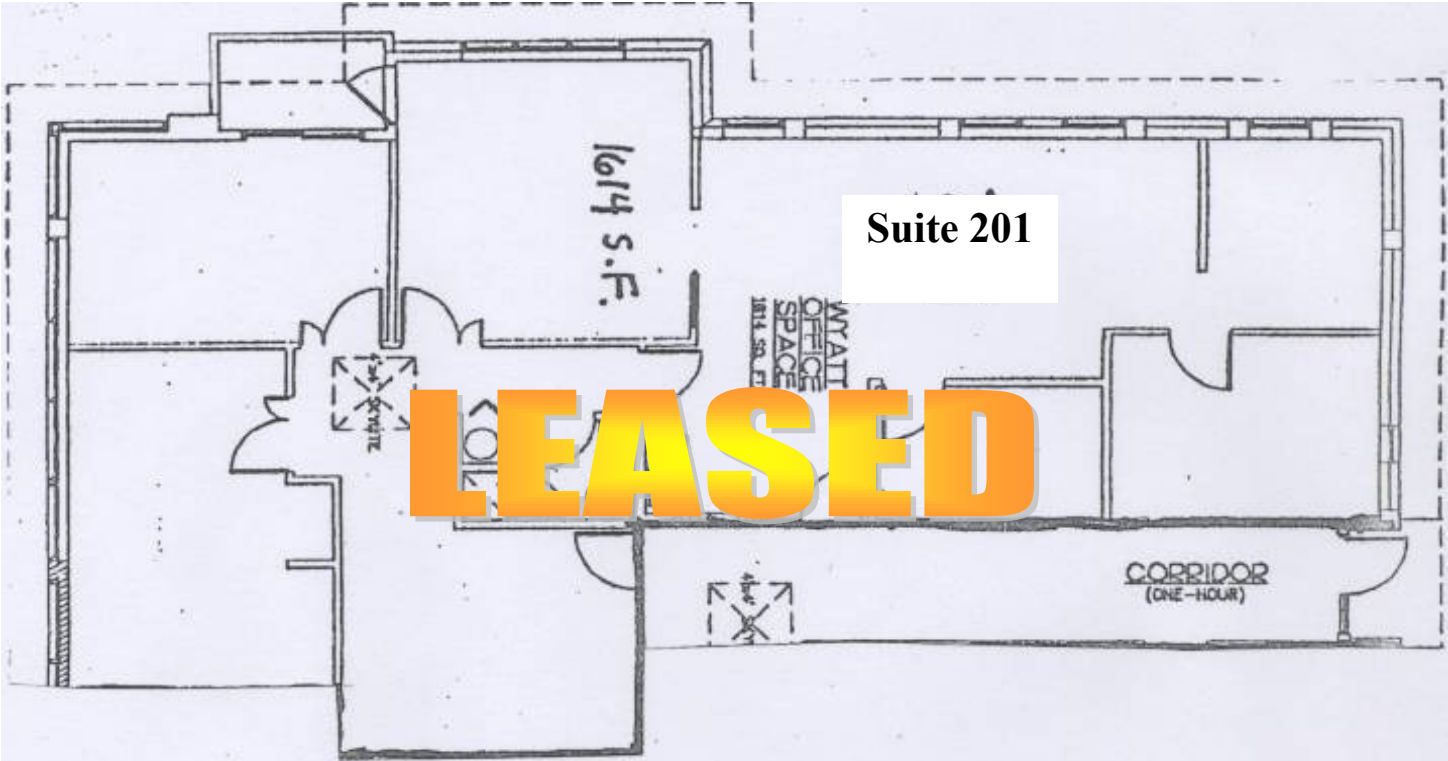
The property information on this flyer is for convenience only and should not be relied upon for accuracy. All prospective purchasers and tenants should conduct their own analysis and inspections for their intended use.

# Suite 1 2,891 SF



# Suite 3 1,557 SF

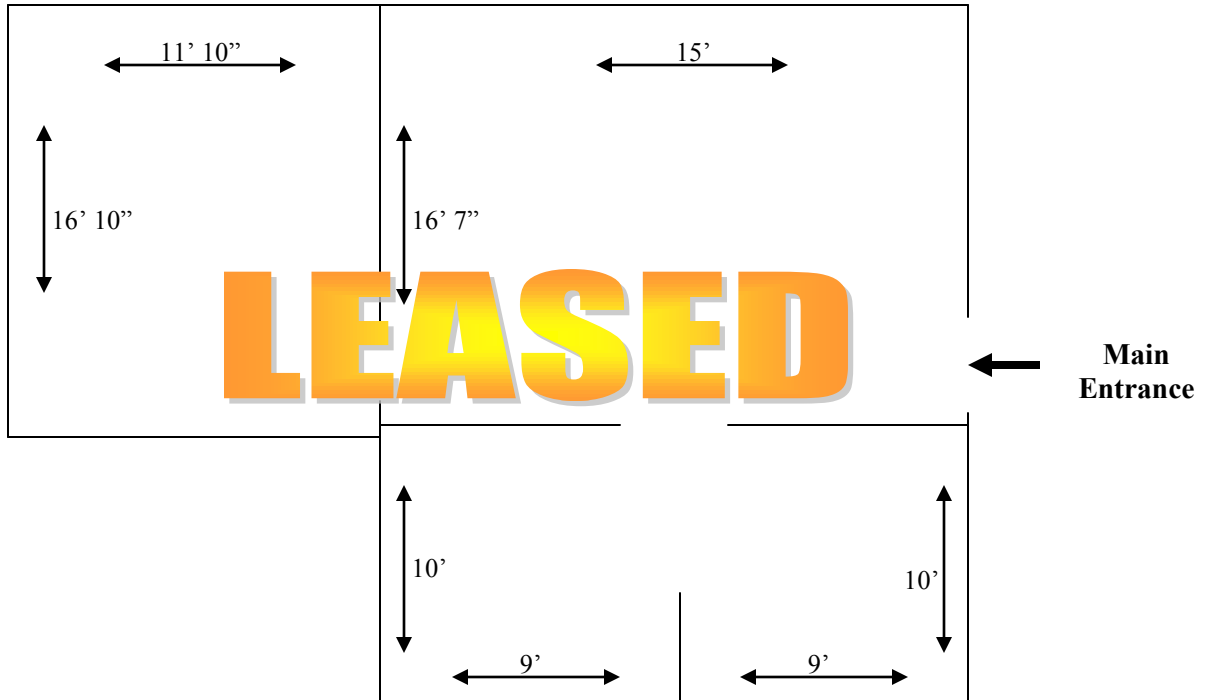




These floor plans are for convenience use only. All critical measurements should be verified.

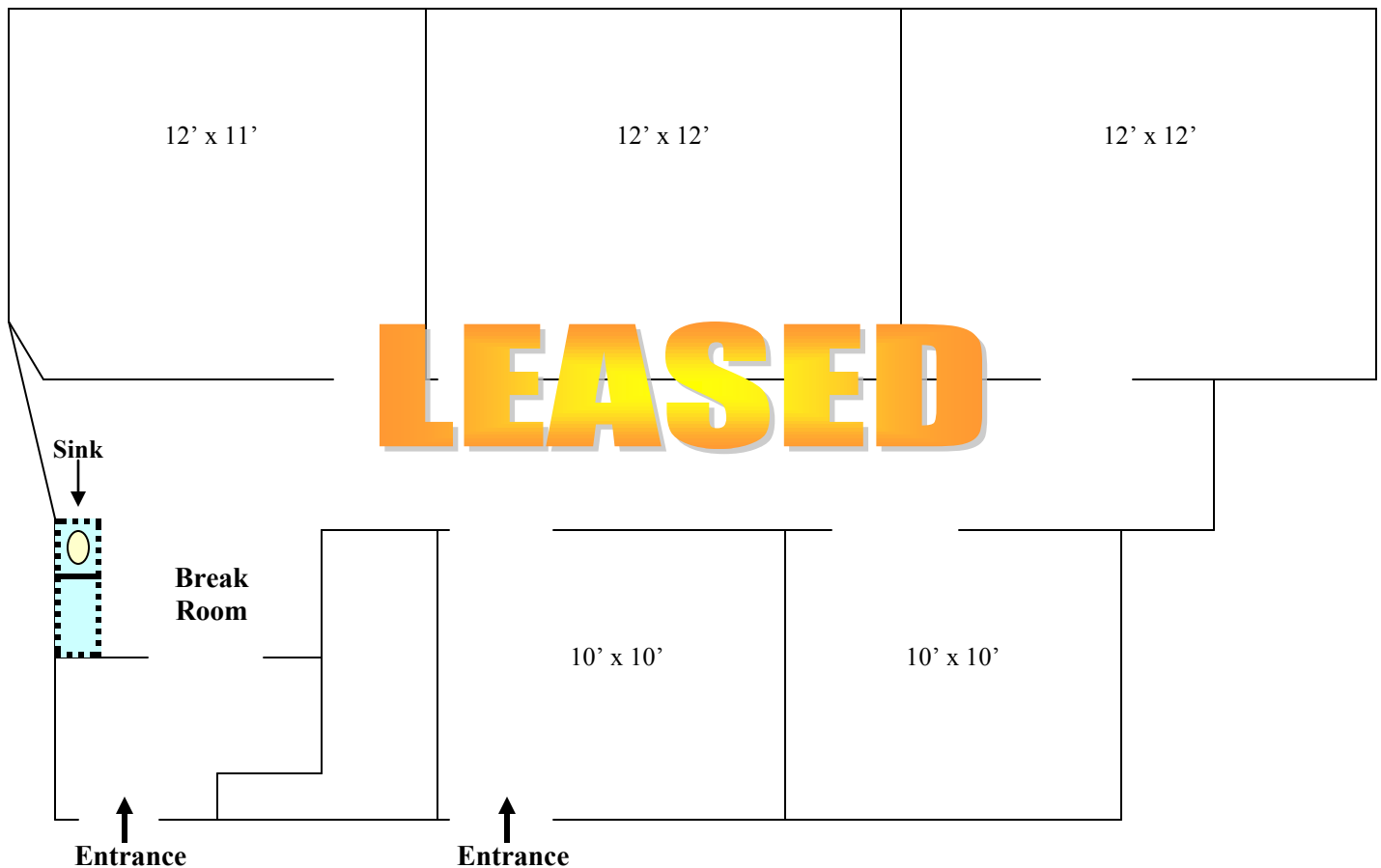
## Suite 202b

702 SF



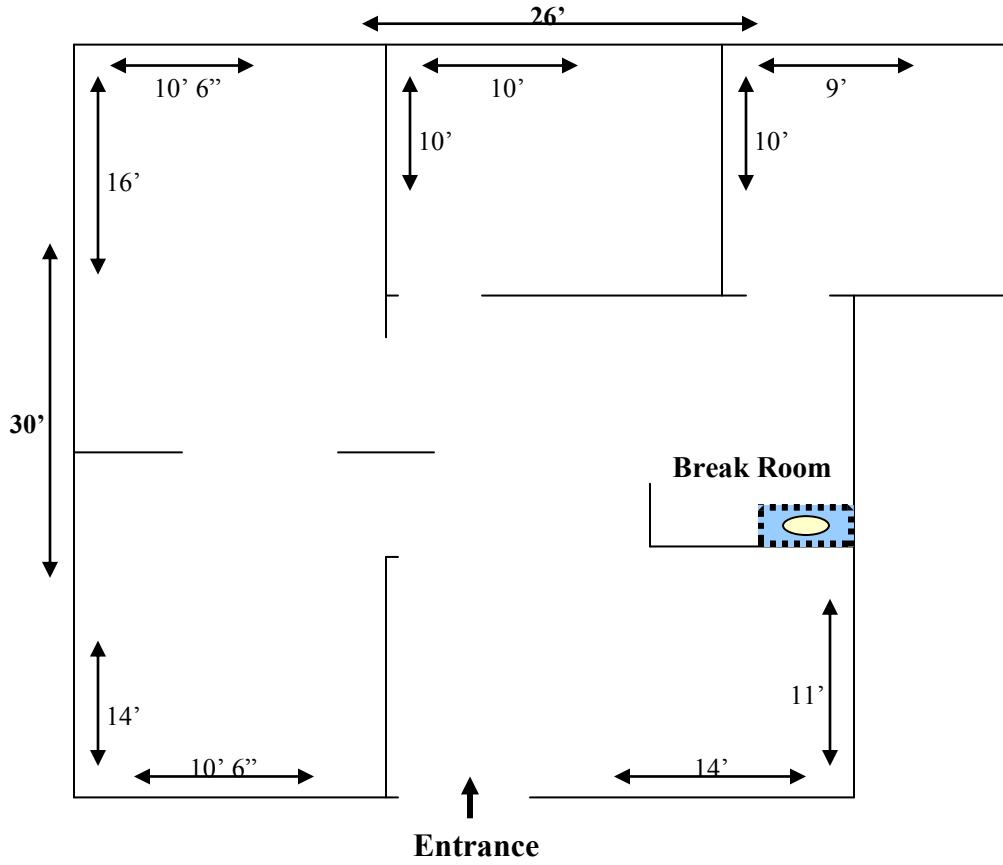
## Suite 206b

837 SF



These floor plans are for convenience use only. All critical measurements should be verified.

# Suite 207



# Suite 205

